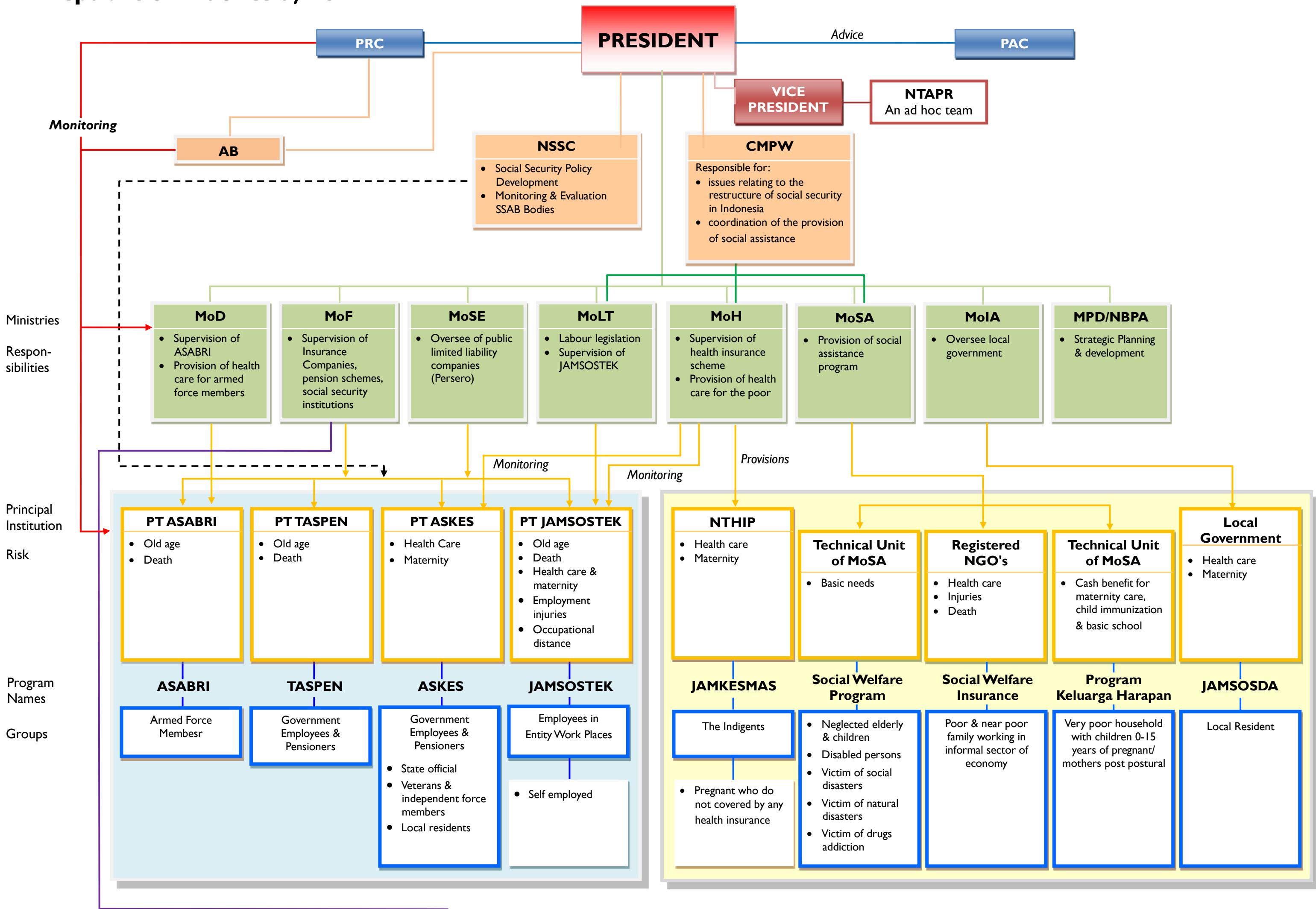


The Organization of Social Protection Republic of Indonesia, 2012



- PRC : The People's Representative Council (Dewan Perwakilan Rakyat - DPR)
- PAC : The Presidential *Advisory* Council (Dewan Pertimbangan Presiden – Wantimpres)
- AB : The Audit Board (Badan Pemeriksa Keuangan – BPK)
- NTAPR : The National Team for Accelerating Poverty Reduction (Tim Nasional Percepatan Penanggulangan Kemiskinan – TNP2K)
- NSSC : The National Social Security Council (Dewan Jaminan Sosial Nasional – DJSN)
- CMPW : The Coordinating Ministry for People's Welfare (Kementerian Koordinator Bidang Kesejahteraan Rakyat)
- MoD : The Ministry of Defense (Kementerian Pertahanan)
- MoF : The Ministry of Finance (Kementerian Keuangan)
- MoSE : The Ministry of State-Owned Enterprise (Kementerian BUMN)
- MoLT : The Ministry of Labour and Transmigration (Kementerian Tenaga Kerja dan Transmigrasi)
- MoH : The Ministry of Health (Kementerian Kesehatan)
- MoSA : The Ministry of Social Affairs (Kementerian Sosial)
- MoIA : The Ministry of Interior Affairs (Kementerian Dalam Negeri)
- NDPA : The Ministry for Planning and Development/The National Board for Planning and Development (Kementerian Negara Perencanaan Pembangunan/Bappenas)
- NTHIP : The National Team for Health Insurance for the Poor (Tim Nasional Jaminan Kesehatan Nasional – Jamkesmas)
- LG : The Local Government (Pemerintah Daerah)
- EPF : Employer Pension Fund (Dana Pensiun Pemberi Kerja – DPPK)
- FIPF : Financial Institution Pension Fund (Dana Pensiun Lembaga Keuangan – DPLK)